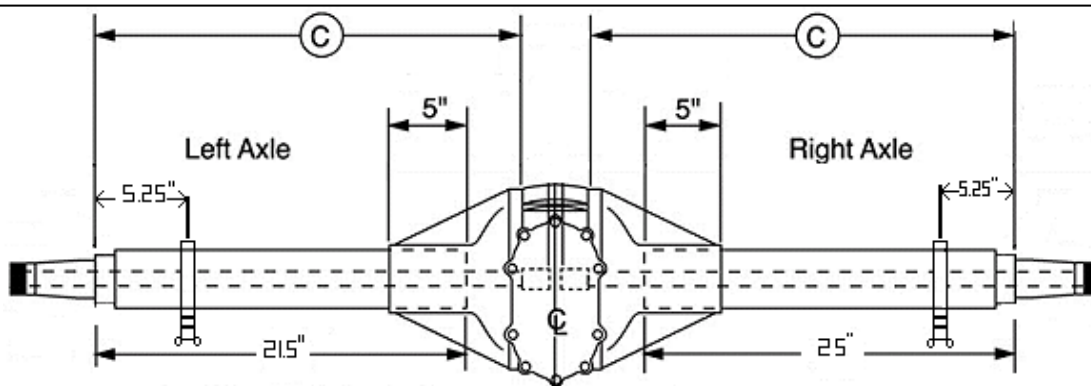
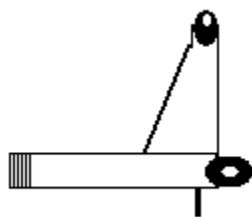


21.5" left and 25 ¼" right tube lengths on cars built after 7-2006 with wide 5 or Howe style
 5x5 22" left and 24.5" right



If you measure the tube lengths from the bearing stop to the end of the bell with the tubes in the rear end you must add 5" to your measurement. This is because that is how far the tubes go into the bells on the rear end. From the center of the trailing arm brackets on the rear end to the bearing stops should be 5.25".

Left spindle



To make left spindle:

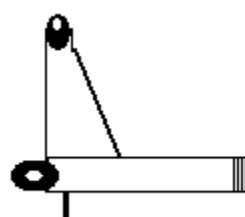
8 degree:
 3/8 slug with the hole away from the motor.

10 degree:
0 slug with the hole in the center.

12 degree:
 3/8 slug with the hole towards the motor.

Steering arm slugs:
1/8 slug with the hole towards the radiator.

Right spindle



To make the right spindle:

6 degree:
 3/8 slug with the hole away from the motor

8 degree:
 0 slug with the hole in the center.

10 degree:
3/8 slug with the hole towards the motor

Steering arm slugs:
3/8 slug with the hole toward the radiator.

The 2017 Crooked Car is 16 ¾" and the 3.25 Car is 14 ¾"

On cars with 21.5" left and 25 ¼" right axle tubes, the measurement from the center of the yolk to the inside of the right frame rail will be 18".

